



MAGNETIC FILTER MANUAL



VIRA ISI VE ENDUSTRIYEL URUNLER A.S

İkitelli Org.San.Bol. Metal İş Sanayi Sit.
11.Blok No.37-39 Basakşehir / İSTANBUL
Tel : +90 212 549 57 70
info@viraisi.com / www.viraisi.com

Instructions before use

Dear users, thank you very much for choosing magnetic dirt separator.

User manual

This manual describes the product features and installation operations in detail. Please read all parts of this manual carefully before use.

The right to make changes to the existing version is reserved without prior notice.

Preliminary inspection



After receiving the product, open the package and check whether the appearance of the package is damaged. The information on the product identification plate matches the model you selected. If there is any inconsistency or uncertainty in the appearance, specifications, etc., please contact the supplier immediately to explain the cause of the defect. Do not use if there is any doubt about the installation of the product.

WARN

The magnetic dirt separator have strong magnets with a strong magnetic field effect. Always pay attention during installation and maintenance. Do not place the magnetic core next to any electronic device to avoid damage of the device.

Principle

The magnetic dirt separator is installed in heating and solar systems, to permanently separate air, dirt, magnetic impurities from system. Eliminate system noise, reduce heat loss on the heating surface, and avoid damage caused by dry burning of the machine when installing the circulating pump. Gaobo magnetic dirt separator is designed to separate loose particulate matter from the system water and discharge it from the system in a controlled manner.

Otherwise these contaminants will fall into the control valve and the circulation pump, causing the breakdown of devices.



Scaling in pipeline



Magnetic impurity



Scaling in boiler



Scaling in radiators

Principle diagram



MAGNET ROD

Insert magnet rod design, let cleaning more conveniently. Open the drainage valve, pull out the magnet rod easily (no need screw out lid), and drainage can be finished.

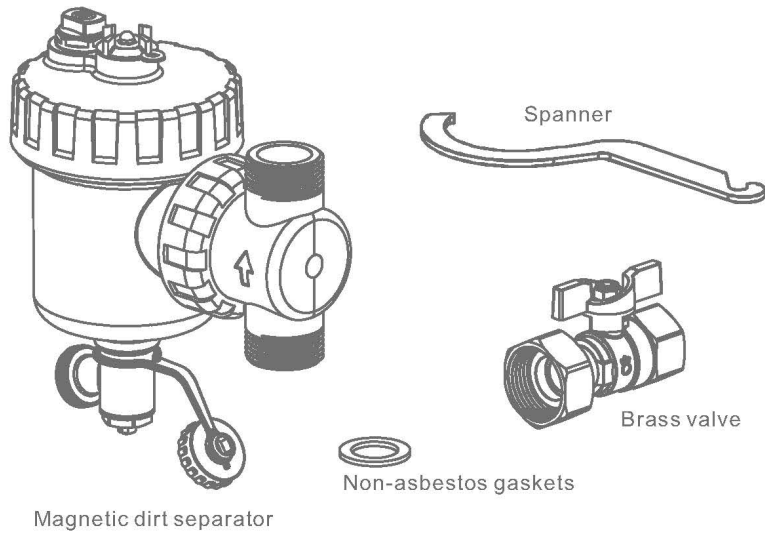


FILTER PEARL

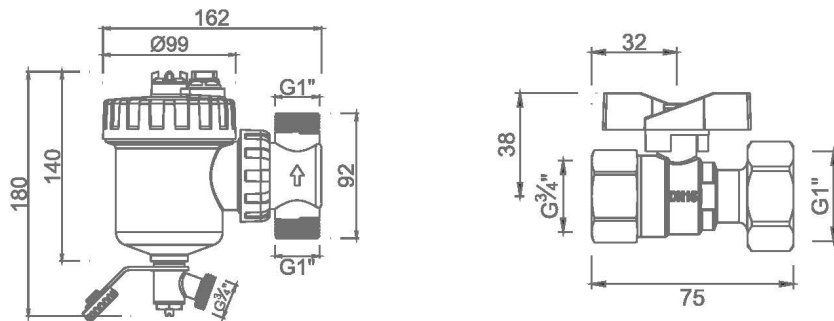
When the dirt separator is filled with water, filter pearl will float up and form a filter film. So the impurities will be blocked by the narrow gap between the pearls. When drainage valve is opened, the impurities will fall down with pearls and be drained out by water flow.

Product List

After unpacking, check all parts according to the following list.

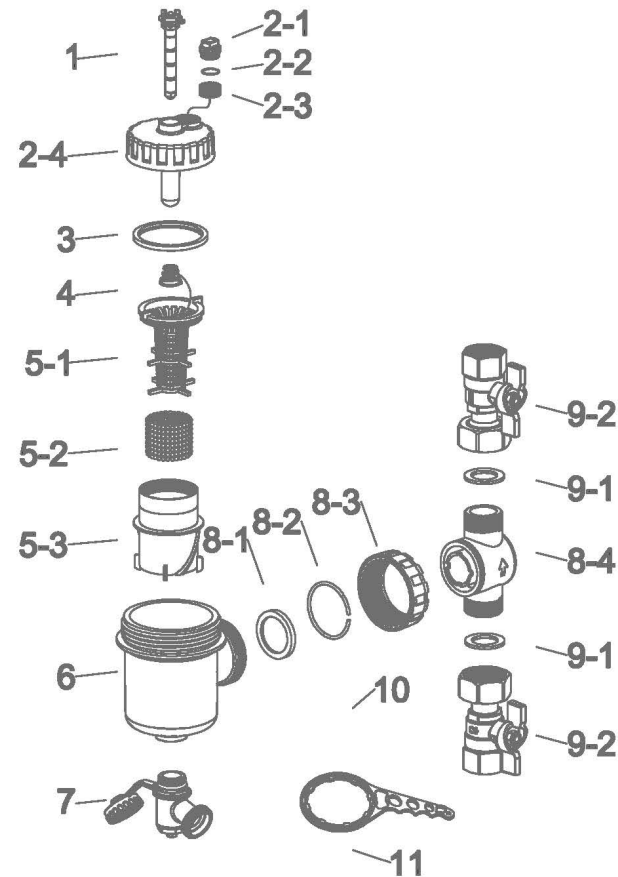


Dimension



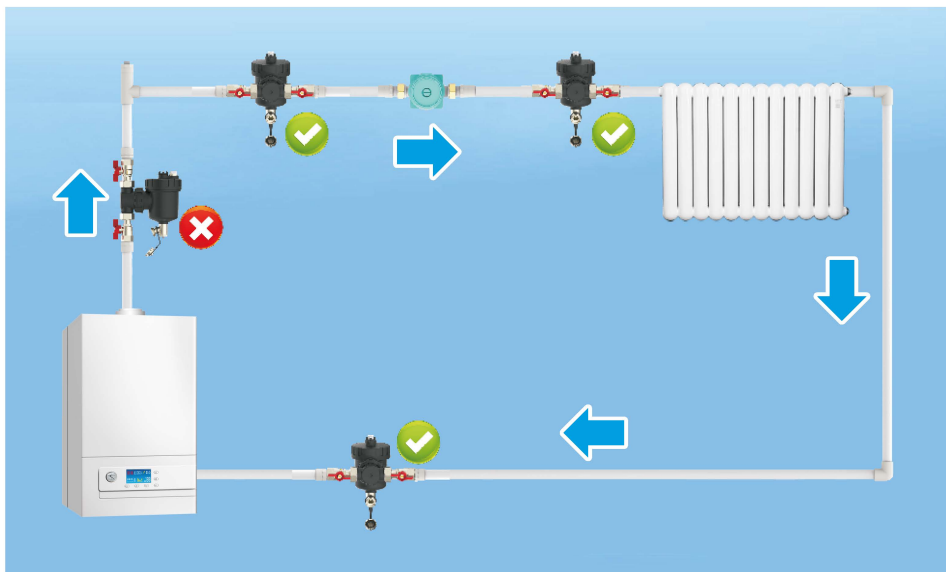
BOM list

NO	Name
1	Magnet Rod
2-1	Vent Valve
2-2	O Ring
2-3	Brass Insert
2-4	Scew Cap
3	Gasket
4	Spring
5-1	Inner Strainer
5-2	Pearls
5-3	Strainer Housing
6	Main Body
7	Drain Valve
8-1	Gasket
8-2	Clamp
8-3	Screw Cap
8-4	Part Body
9-1	Non-asbestos Gasket
9-2	Ball Valve
10	Spanner
11	Spanner

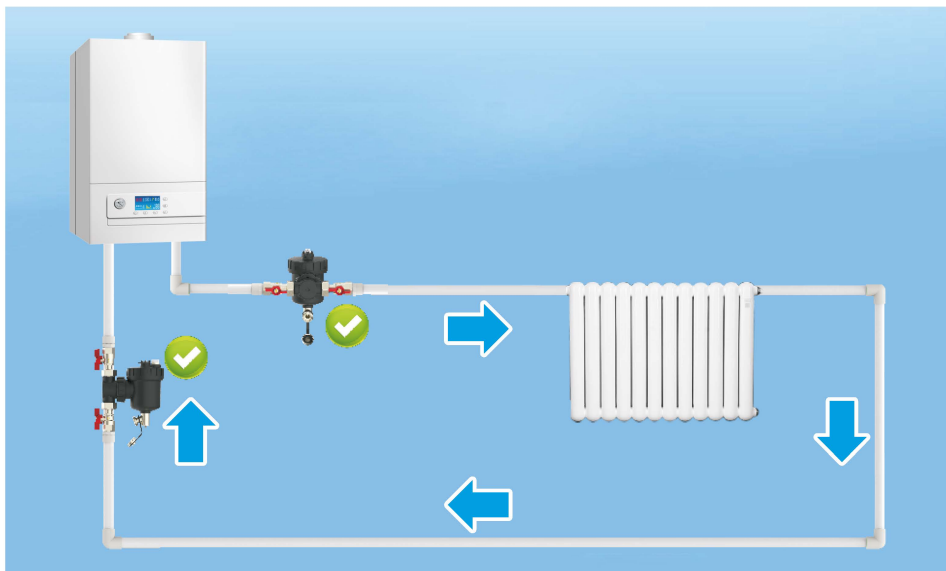


Installation position

Unsealed/Open Vented System



Sealed System:



Steps

