

VACUUM DEGASSERS

System Voltage	: 220, 230 V ± 10% / 50 Hz
Connection Sizes	: 1/2" , 3/4"
Operating Temp.	: 0 - 90 °C
Range Ambient Temp.	: 0 - 40 °C
Range Feature	: Standby Mode

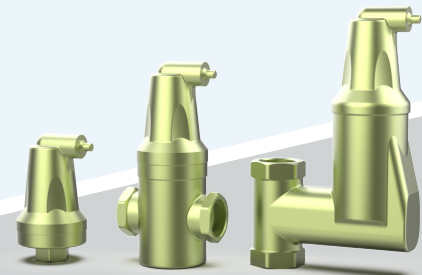


Product Code
VIRA-DEG



AUTOMATIC AIR VENTS

Body	: Brass / Nickel Coated
Float	: PP - Polypropylene
Max. Work.Temp.	: 110 °C
Max. Work. Pressure	: 10 Bar

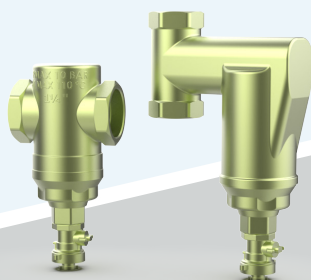


Product Code
SV-D



DIRT SEPARATORS

Body	: Brass/ Nickel Coated
Float	: PP - Polypropylene
Max. Work.Temp.	: 110 °C
Max. Work. Pressure	: 10 Bar

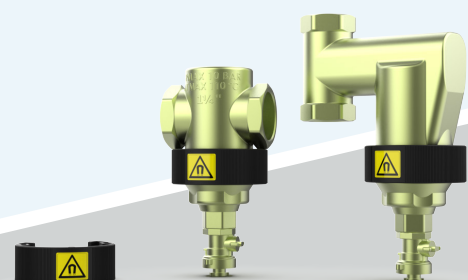


Product Code
SD-D



MAGNETIC DIRT SEPARATORS

Body Magnet	: PA
Magnet	: Neodymium
Magnet Power	: 9.000 Gauss



Product Code
SD-Y-M / SD-D-M



ECO AIR VENT

Body : Brass
 Float : PP - Polypropyle
 Max. Work.Temp. : 110 °C
 Max. Work. Pressure : 10 Bar



Product Code
ECO AIR VENT



DEAERATOR / AIR SEPARATOR

Body : Carbon Steel - ST37
 Size : DN 50 - 600
 Max. Work.Temp. : 110 °C
 Max. Work. Pressure : 10 Bar



Product Code
SV



DIRT SEPARATORS

Body : Carbon Steel - ST37
 Size : DN 50 - 600
 Max. Work.Temp. : 110 °C
 Max. Work. Pressure : 10 Bar



Product Code
SD



MAGNETIC DIRT SEPARATOR

Body : Carbon Steel - ST37
 Size : DN 50 - 600
 Max. Work.Temp. : 110 °C
 Max. Work. Pressure : 10 Bar
 Magnet Power : 13.000 Gauss



Product Code
SD-M



DEMOUNTABLE DIRT SEPARATOR

Body : Carbon Steel - ST37
 Size : DN 50 - 600
 Max. Work.Temp. : 110 °C
 Max. Work. Pressure : 10 Bar



Product Code
SD-T



AIR AND DIRT SEPARATORS

Body : Carbon Steel - ST37
 Size : DN 50 - 600
 Max. Work.Temp. : 110 °C
 Max. Work. Pressure : 10 Bar



Product Code
SC



DEMOUNTABLE AIR AND DIRT SEPARATORS

Body : Carbon Steel - ST37
 Size : DN 50 - 600
 Max. Work.Temp. : 110 °C
 Max. Work. Pressure : 10 Bar



Product Code
SC-T



MAGNETIC AIR & DIRT SEPARATOR

Body : Carbon Steel - ST37
 Size : DN 50 - 600
 Max. Work.Temp. : 110 °C
 Max. Work. Pressure : 10 Bar
 Magnet Power : 13.000 Gauss



Product Code
SC-M



HYDRAULIC SEPARATOR

Body : Carbon Steel - ST37
 Size : DN 50 - 600
 Max. Work.Temp. : 110 °C
 Max. Work. Pressure : 10 Bar



Product Code
SCX



MAGNETIC DEAERATOR, DIRT AND HYDRAULIC SEPARATOR

Body : Carbon Steel - ST37
 Size : 1" - 2"
 Max. Work.Temp. : 110 °C
 Max. Work. Pressure : 10 Bar
 Magnet Power : 13.000 Gauss

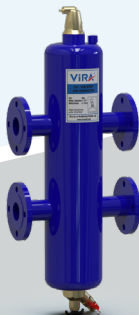


Product Code
SCX-D-M



MAGNETIC DEAERATOR, DIRT AND HYDRAULIC SEPARATOR

Body : Carbon Steel - ST37
 Size : DN 50 - 600
 Max. Work.Temp. : 110 °C
 Max. Work. Pressure : 10 Bar
 Magnet Power : 13.000 Gauss

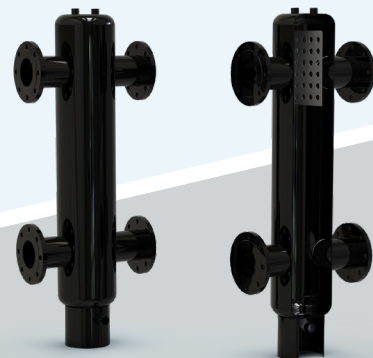


Product Code
SCX-M



HYDRAULIC BALANCING TANK

Body : Carbon Steel - ST37
 Size : DN 50 - 600
 Max. Work.Temp. : 110 °C
 Max. Work. Pressure : 10 Bar

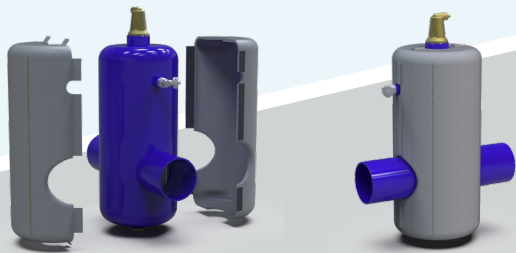


Product Code
SB



VIRAJAC - INSULATION JACKET

Touch Temperature (Exterior) of all jackets : < 45°C
 Classification temperature : 260°C
 Working Temperature : 230°C
 Density : 140 kg/m3
 Color : Gray



Product Code
VIRAJAC



VERTICLE SEPARATORS

Body : Carbon Steel - ST37
 Size : DN 50 - 600
 Max. Work.Temp. : 110 °C
 Max. Work. Pressure : 10 Bar



Designed For
 Verticle Lines



CHEMICALS



Product Code
VK



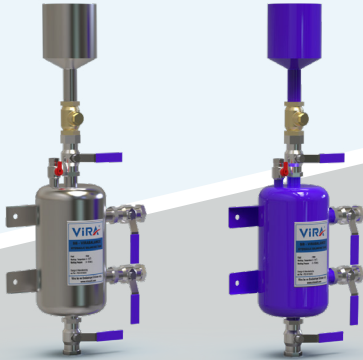
TEST KITS

pH Test Kit
 Iron Test Kit
 Amine Test Kit
 Cooper Test Kit
 Phosphate Test Kit
 German Hardness Test Kit
 French Hardness Test Kit



CHEMICAL DOSING POTS

PED 2014/68/EU
 Welding BS EN281-1
 Fitting to BES21/ISO 7-1



Product Code
VDK



PLASTIC MAGNETIC DIRT SEPARATOR AND DOSING POT

Pipe Layout : Vertical & Horizontal
 Height / Width : 150 mm / 162 mm
 Diameter of the housing : 99mm
 Working Temp. Range : 0 - 90°C
 Max. Working Pressure : 5 bar

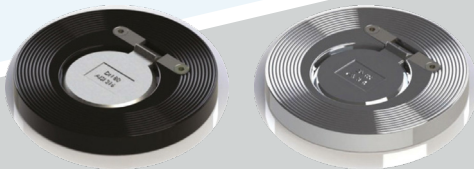


Product Code
VPMC-1



SWING CHECK VALVES - WAFER

Body : Carbon Steel / Stainless Steel
 Flap : Carbon Steel / Stainless Steel
 Sealing : EPDM
 Pressure Class : PN 16
 Max. Work.Temp. : 130 °C



Product Code
WSCV



RUBBER EXPANSION JOINTS

Body : EPDM / NBR
 Flange : GGG 40.3 Sfero Casting
 Sizes : DN32 - DN1000
 Pressure Class Max. : PN 16
 Work. Temp. : 110 °C
 Expansion : -20 mm, +15 mm

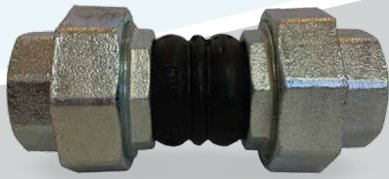


Product Code
LK-D



TWIN SPHERE UNION RUBBER

Rubber Material	: Special Synthetic Rubber
Connection Material	: Cast Iron
Reinforcing Mesh Material	: Nylon Based Rubber Rope
Nominal Pressure	: 10 Bar
Temperature	: 90°C
Connection Type	: İç Dişli

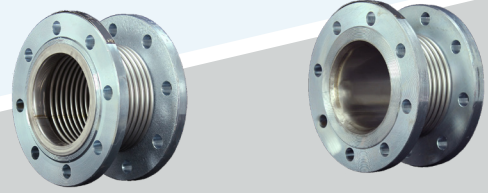


Product Code
KM-DB-D-100



AXIAL EXPANSION JOINTS

Design	: Ejma Standards
Connection Type	: Floating Flanged / Fixed Flanged
Nominal Pressure	: 16 Bar/ 2,5 Bar (63 Bar Optional)
Temperature	: -80°C / 427°C
Expansion	: 30mm (-20+ 10) / 60mm (-40+20)

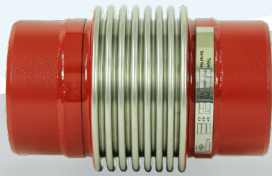


Product Code
KM-D



AXIAL EXPANSION JOINTS

Design	: Ejma Standards
Connection Type	: Welding End / Threaded
Nominal Pressure	: 16 Bar/ 2,5 Bar (63 Bar Optional)
Temperature	: -80°C / 427°C
Expansion	: 30mm (-20+ 10) / 60mm (-40+20)



Product Code
KM-K



VIBRATION ABSORBER EXPANSION JOINTS

Design	: Ejma Standards
Connection Type	: Floating Flanged
Nominal Pressure	: 16 Bar/ 2,5 Bar (63 Bar Optional)
Temperature	: -80°C / 427°C
Expansion	: 30mm (-20+ 10) / 60mm (-40+20)



Product Code
KM-TY



EXTERNALLY PRESSURIZED EXPANSION JOINTS

Design : Ejma Standards
 Connection Type : Floating Flanged / Threaded
 Grooved / Welding End
 Nominal Pressure : 16 Bar/ Max. 64 Bar Optional
 Temperature : -80°C / 427°C
 Expansion : 30mm / 60mm / 90mm / 120mm

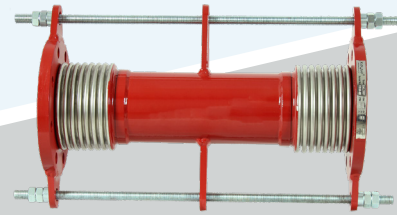


Product Code
KM-DB-F



DILATATION EXPANSION JOINTS WITH LIMIT RODS

Design : Ejma Standards
 Connection Type : Floating Flanged / Threaded
 Grooved / Welding End
 Nominal Pressure : 16 Bar/ Max. (40 Bar Optional)
 Temperature : -80°C / 427°C
 Expansion : y: ±25mm / ±50mm / ±75mm / ±100mm

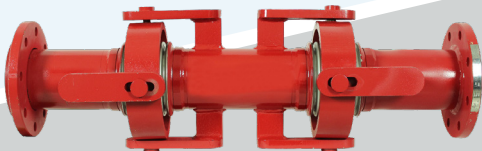


Product Code
KM-LD-F



EARTHQUAKE EXPANSION JOINTS

Design : Ejma Standards
 Connection Type : Floating Flanged
 Nominal Pressure : 16 Bar/ Max. (40 Bar Optional)
 Temperature : -80°C / 427°C
 Expansion : x : ±50mm
 y-z : ±50mm/ ±100mm/ ±150mm/ ±200mm



Product Code
KM-MD-F



EXTERNALLY PRESSURIZED EARTHQUAKE EXPANSION JOINTS

Design : Ejma Standards
 Connection Type : Floating Flanged
 Nominal Pressure : 16 Bar/ Max. (40 Bar Optional)
 Temperature : -80°C / 427°C
 Expansion : x : ±50mm
 y-z : ±50mm/ ±100mm/ ±150mm/ ±200mm

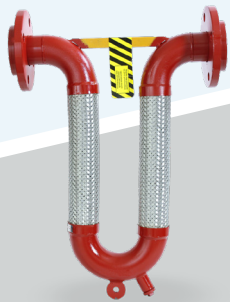


Product Code
KM-MDB-F



U FLEX EXPANSION HOSES

Design : Ejma Standards
 Connection Type : Floating Flanged
 Nominal Pressure : 16 Bar
 Temperature : -80°C / 427°C
 Expansion : ±50 mm / ±100mm

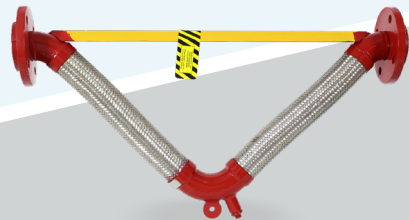


Product Code
UFLX-F



AXIAL EXPANSION JOINTS

Design : Ejma Standards
 Connection Type : Floating Flanged
 Nominal Pressure : 16 Bar
 Temperature : -80°C / 427°C
 Expansion : ±50 mm / ±100mm



Product Code
VFLX-F



EXPANSION TANK

Capacity : Up To 5000 LT.
 Pressure : 10 / 16 / 25 Bar



Product Code
VEXT



CALORIFIER / WATER HEATER

Capacity : - 5000 LT.
 Option : Single and Double
 Serpentine Boiler



Product Code
VWH





New solutions for HVAC... Preblem-free

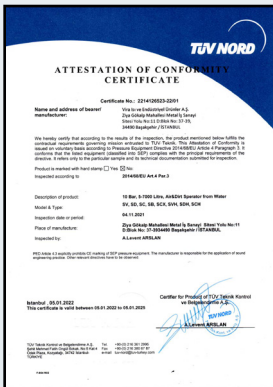


Vira products provide solutions to the problems.

Vira is a young, dynamic and expert company regarding production of separators, valves and steam related products. To meat our customers needs, we offer customers a combination of our application experience, on going technical support, correct installation and commissioning ability with our high quality products.

Vira provides durable, high-quality valves and steam related products that are used in many kinds of applications, from unique custom jobs to large scale installations.

- Automatic Air Vent
- Solar Automatic Air Vent
- Deaerators
- Dirt Separators
- Hydraulic Balance Tanks
- Butterfly Valves
- Ball Valves
- Check Valves
- Expansion Joints
- Safety Valves
- Actuators
- Steam Separators
- Condensate Pump
- Sample Coolers
- Steam Boiler Automation
- Automatic Blowdown Systems
- Steam Flow Meters
- Steam Traps



Address: Metal İş San. Sitesi 11.Blok No: 37/39 İkitelli - İstanbul

E-mail: info@viraisi.com WebSide: www.viraisi.com

Phone: +90 (212) 549 57 70 (pbx) Fax: +90 (212) 549 58 48